



Education
Strategy
Group

Colorado Technical Working Group

January 29, 2024

Agenda

- P20 data system context
 - What, exactly, is a P20 data system?
 - CO P20 data landscape
 - P20 data systems in other states
- P20 data uses
 - What problems can be solved with P20 data?
 - How are these data used in other states?
 - How are these data used by/for various audiences?

What is a P20 data system?

- Often referred to as a **State Longitudinal Data System (SLDS)**
- Person-level (“unit record”) data system that formally links data elements across state agencies.
- Typically, four “core” agencies considered:
 - Early childhood
 - K12
 - Postsecondary
 - Workforce
- Many states include data from additional state agencies.

What a P20 data system is **not**:

- A data snapshot or “moment in time”
 - Data are linked over years; timeframe determined by participating agencies
- Reports
- Data dashboards
- Solely for research use
 - There are opportunities for operational use as well
- Owned or managed by one partner agency
 - Irrespective of where the data system is housed

P20 data systems in other states

- 40 states have P20 data systems
 - Often (not always) supported by Federal SLDS grants
- Many best practices and many lessons learned
 - Experts joining the group over the next few months to discuss their experiences
- Exemplar states
 - Kentucky
 - Indiana
 - Tennessee

KY STATS

KLDS

KENTUCKY LONGITUDINAL DATA SYSTEM



Welcome to the Indiana Data Hub

Maintained by Indiana Management Performance Hub, the Indiana Data Hub is your home for actionable data covering a variety of subject matter areas within Indiana State Government. This data is housed securely, de-identified, and published in a manner that promotes analysis, collaboration, and innovation. Get started now by searching for a dataset below or you can click on specific datasets in the toolbar.



- Popular tags: [COVID-19](#) [Coronavirus](#) [Pandemic](#) [ISDH](#) [FSSA](#) [OB Navigator](#)
[Maternal and Child Health](#) [Datapalooza](#) [Medicaid](#) [DWD](#) [Transparency](#)

Explore Our Data

Explore the data behind Indiana's COVID-19 Response



COVID-19



Education



Environmental and
Regulatory Services



General Government and
Citizen Services



Government Finance



Health and Human Services



Public Safety

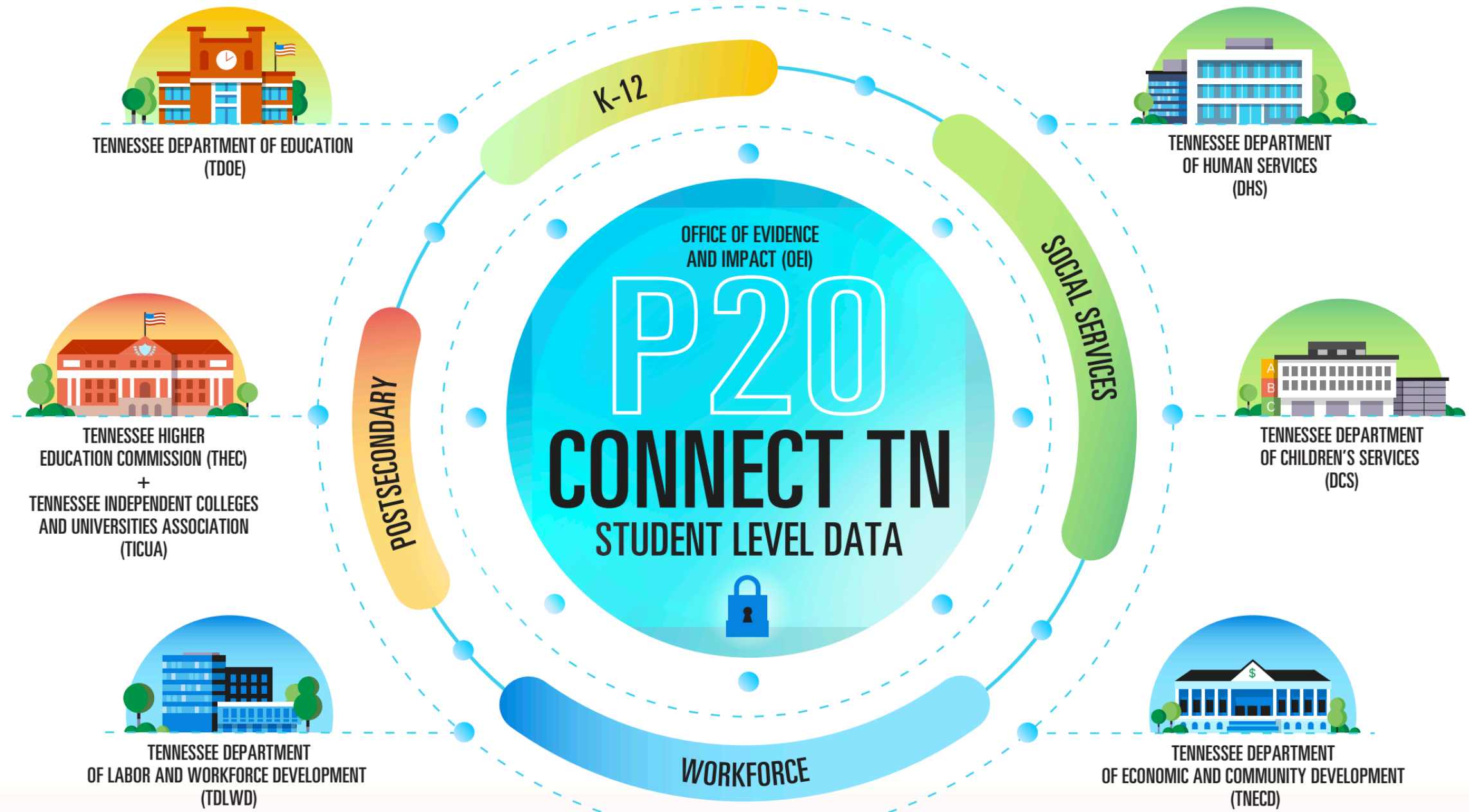


Workforce and Economic
Development

Tennessee Can Lead on Using Data Access to Improve Opportunities

Individual Tennesseans and those closest to them need reliable information to successfully navigate their paths to higher education, careers, and beyond. In Tennessee, state agencies have secure access to linked student-level data through the statewide longitudinal data system, P20 Connect TN. Researchers and state officials can use this information to explore long-term student outcomes and understand what students need to achieve their education and workforce goals. Yet opaque approval processes and access procedures effectively put this information out of reach for postsecondary administrators, district leaders, and other student-serving organizations across the state. By prioritizing transparency and expanding safe access to linked data, Tennessee can help connect every person to the information and support they need to achieve their goals.

LINKED DATA EXISTS IN TENNESSEE THROUGH THE P20 CONNECT TN DATA SYSTEM



TENNESSEANS NEED ACCESS TO THIS INFORMATION, BUT THEY DON'T HAVE IT YET.

Districts, postsecondary institutions, and other organizations need longitudinal data to help individuals succeed. This data exists in P20 Connect TN—yet practical barriers put it out of reach for those outside of state agencies. Tennessee must take action to ensure that partners at every level have safe and meaningful access to P20 Connect TN data. Meaningful access includes:



PUBLIC-FACING RESOURCES



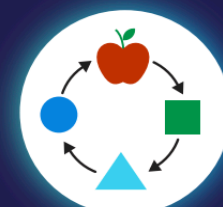
TRANSPARENT POLICIES + PROCEDURES



USER-FRIENDLY SYSTEMS



OUTREACH + CAPACITY BUILDING



ENABLE CONTINUOUS IMPROVEMENT



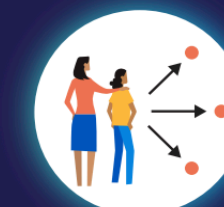
INFORM POLICYMAKING



SUPPORT INDIVIDUAL STUDENTS



DRIVE LOCAL PARTNERSHIPS



CONNECT STUDENTS AND FAMILIES TO CRITICAL INFORMATION

Colorado's data landscape

Data use in other states

- Research (“capital R research”) in partnership with faculty
- Applied research for practice, policymaking
 - i.e., statutorily mandated annual reports
- Data analysis, presentation for policymakers
 - Often ad hoc requests
- Data analysis, presentation for institutional improvement
 - i.e., transfer behavior
 - Workforce outcomes of graduates, wage information
 - Pipeline issues – i.e., where are students coming from when entering higher ed?

Problems to solve with CO P20

Issues to grapple with (not today)

- Data security
- Consistent IDs across records
- Building the data infrastructure
- Governance
 - Who can access what data elements?
 - What is process for accessing data?
 - Who approves data requests?

Next steps

- Next meeting: **Monday, February 26**
- CDHE team provides financial value analysis update
- P20 practitioners/experts from other states will join future meetings