

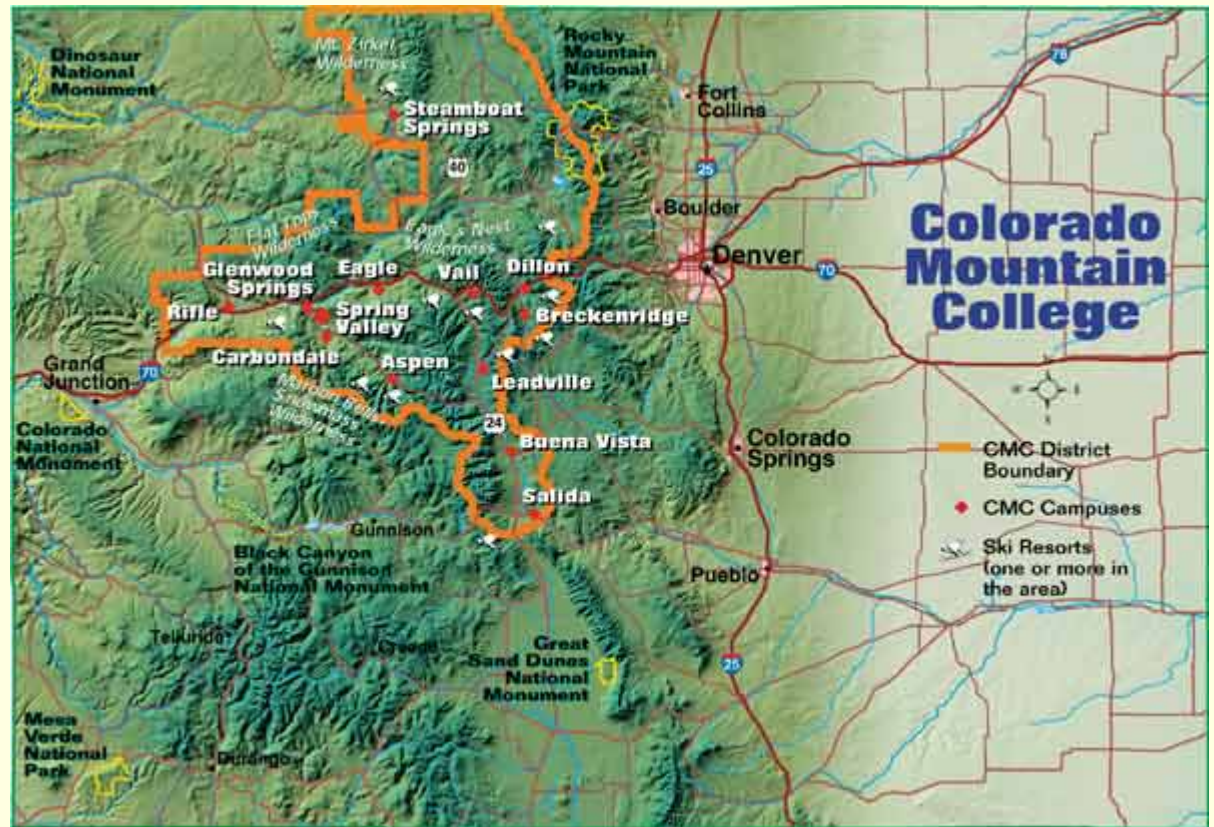
COLORADO MOUNTAIN COLLEGE

Our Mission: Leading Through Learning

Colorado Mountain “Junior College” District and Service Area

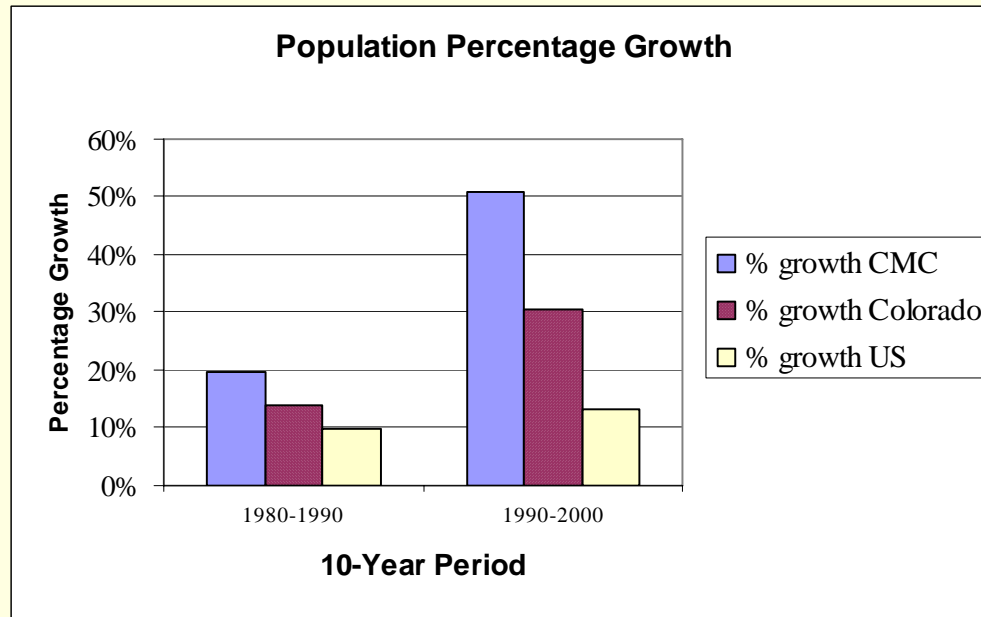
Our Vision:

To provide access to success for individuals and their communities.



9 Counties – 12,000 sq. miles – 7 campuses

Our Area is Growing!



1990 CMC-Area
Population:
119,000

2000 CMC-Area
Population:
181,000

- **HIGH GROWTH AREAS: CMC counties averaged a 50% growth rate during the last ten years.**

CMC's Goals:

- **Mission Goal 1:** We will be accountable for providing quality education opportunities that promote access & success for our learners.
- **Mission Goal 2:** We will design and deliver vocational and liberal education degree and certificate programs that prepare our learners for the workforce, citizenship and transfer to baccalaureate institutions.

CMC's Goals:

- **Mission Goal 3: We will offer cultural and life-long educational opportunities that prepare our learners for enriched lives.**
- **Mission Goal 4: We will join with diverse communities, business, industry, schools and government to build strong communities in our region and our world.**



Key Strengths

- **STUDENT ACCESS:** Over 11% of adults in the CMC District attend classes at a CMC Center each year.
- **STUDENT SUCCESS:** As a community college, we are committed to ensuring success for all students.
- **FINANCIAL SOUNDNESS:** CMC is on solid financial footing.



Opportunity #1: Improve Success

- **11% of students are declared degree-seekers**
- **450-500 students graduate each year**
- **Retention & graduation rates for degree-seekers are lower than state average**
- **89% of students do not declare a degree**



GOALS:

55% persistence rate for degree-seekers

Identify satisfaction measures and meet the educational goals of at least 90% of all students.

Opportunity #2: Improve Access

- **About 11% of District residents, 18 or older, enrolled in CMC credit courses during 2000-2001**
- **About 6% of CMC students enroll in Distance Education delivery**
- **CMC students tend to work full-time and face geographic as well as time challenges to attend college**



GOALS:

14% Participation Rate

On-Line Course Components

Improved access for residents of Service Area counties

Opportunity #3: Increase the Number of Diverse Learners

- **The Hispanic population has grown in CMC District counties from 22,493 in 1990 to 44,803 in 2000, and now makes up 25% of the population**
- **CMC's diverse students include ethnic minorities and students with a wide range of academic preparation**
- **CMC spends \$.5 million/year on ESL (1,876 students enrolled 2000-2001)**



GOALS:

25% of students will be “diverse learners”

Improve transition of developmental and ESL students into college level courses

Opportunity #4: Improve Provision of Workforce Training

- **We served 346 businesses & 2,528 employees last year**
- **College Board and other surveys indicate demand for workforce training exceeds supply**
- **CMC District businesses have an on-going need for trained workers**



GOALS:

Assess demand and provide timely response to district training needs

Increase the delivery of workforce training to make up 15% of total annual SFTE

Additional Opportunities

- **Provide Access to Upper-Level and Graduate Education:**
 - **College Board Study finds that residents in CMC's service area expect access to education at all levels. REAP funds currently support 3 joint educational programs (with Mesa State and Metro State Colleges).**
- **Improve Access to Education for Older Adults**
- **Ensure Access to Statewide Technology Plans and Funds**
- **Change Statute to reflect Community College status**

Admission Standards

- **CMC is an open-enrollment community college**
- **Some programs have additional requirements:**
 - **Culinary Arts**
 - **Nursing**
 - **Outdoor Rec. Leadership**
 - **Professional Photography**
 - **Veterinary Tech.**

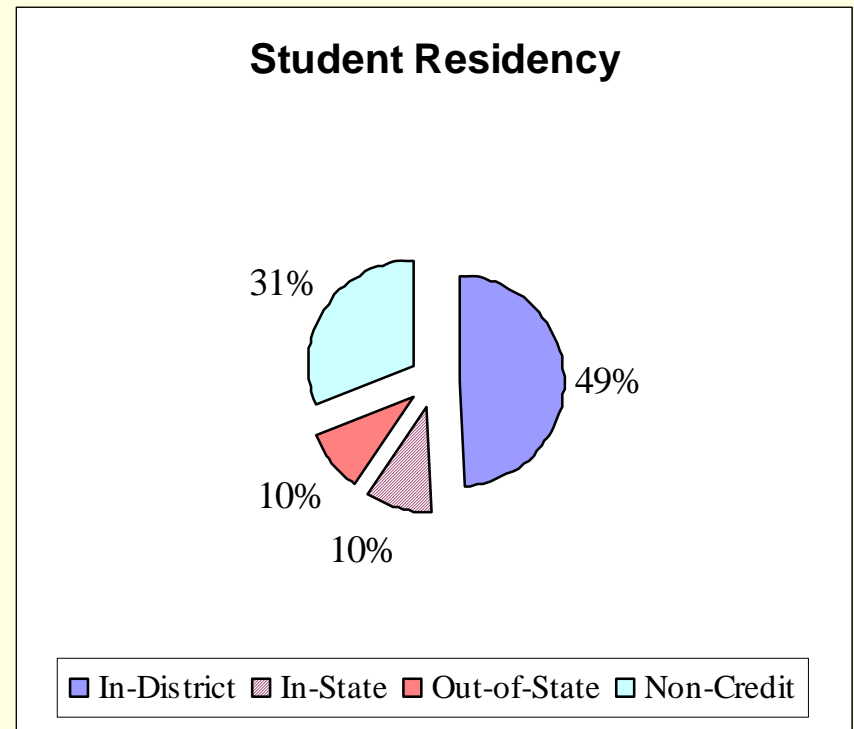


Student Characteristics

2000-2001:

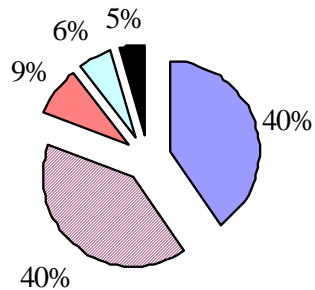
24,866 Students

- **About half are in-district residents**
- **Male and female students are about equal in number**



Student Characteristics

Credit Hour Load

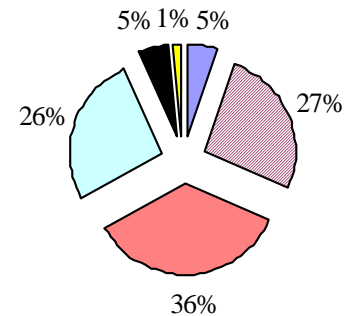


■ 0 Hours ■ .1 - 5.9 hours ■ 6 - 11.9 hours
■ 12 - 23.9 hours ■ 24+ hours

**Typical Credit-Hour Load:
3-6 Hours per Year**

Average Age: 33.3

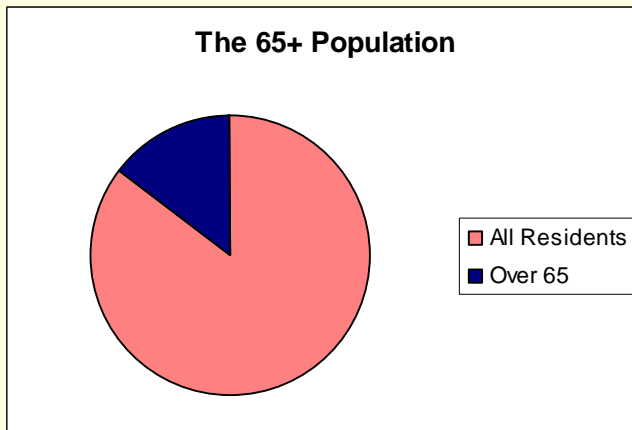
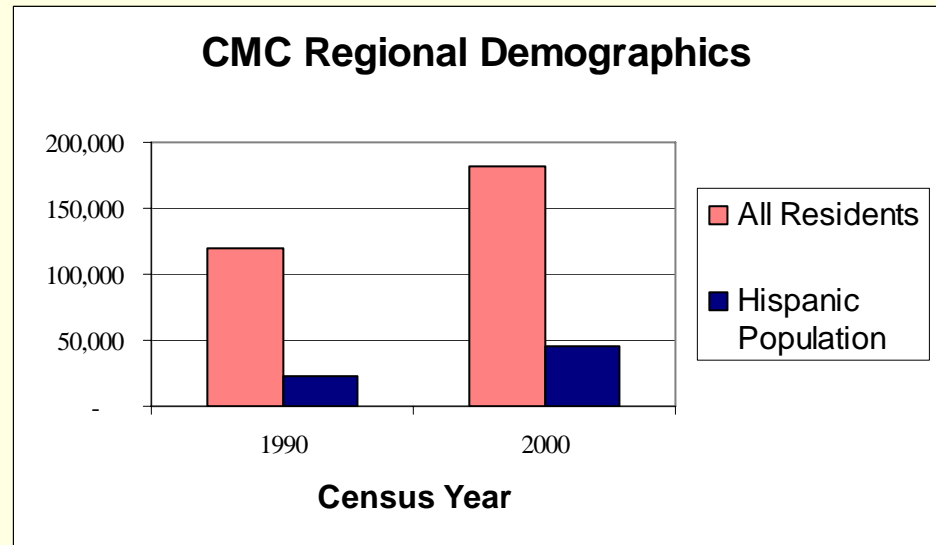
Student Ages



■ Under 16 ■ 17 - 24 ■ 25 - 39
■ 40 - 59 ■ 60 plus ■ Unknown

CMC Regional Demographics

The Hispanic Population has doubled in CMC Counties.



Residents 65 and older now make up 17% of the CMC Region.

Market Niche

- **Community Residents at all educational levels**
- **Older Adults**
- **Employers and Employees**
- **Growing Hispanic population**
- **Recent High School Graduates**



"They treat you like a person, not a number."

**HOW CMC SPENDING
COMPARES TO PEER COLLEGES
ACCORDING TO THE NATIONAL ASSOCIATION
OF COLLEGE & UNIVERSITY BUSINESS OFFICERS**

	<i>PEERS</i>	<i>CMC</i>
<i>Academic Expenditures</i>	62%	56%
<i>Instruction</i>	50%	49%
<i>Academic Support</i>	9%	7%
<i>Support Expenditures</i>	37%	43%
<i>Student Services</i>	10%	11%
<i>Institutional Support (INCL. TECHNOLOGY)</i>	16%	23%
<i>Plant Op's/Maintenance</i>	10%	9%
<i>Utilities</i>	5%	2%
<i>Plant Op's</i>	5%	7%

CMC Faculty and Staff

81 Full-Time Faculty

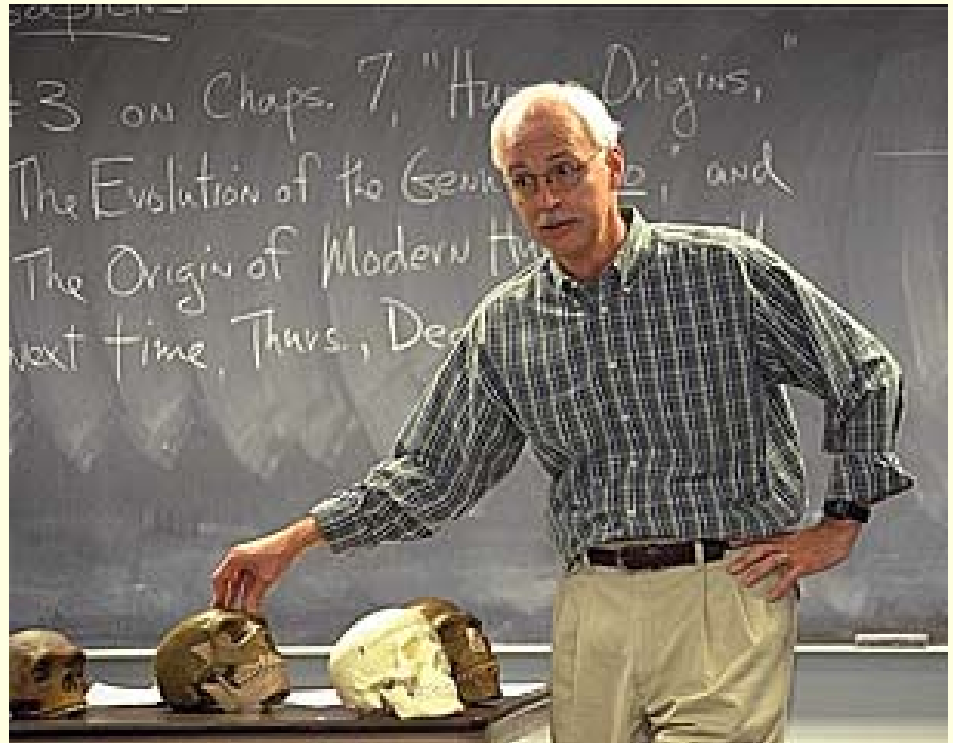
**1,411 Community
Faculty**

<5% minority Faculty

261 Full-Time Staff

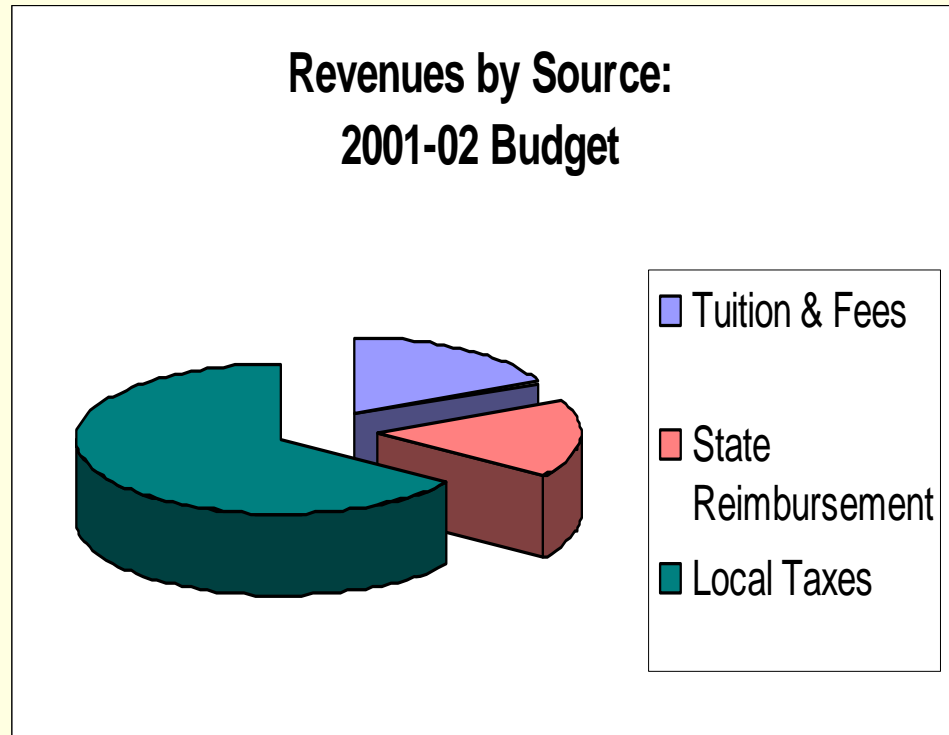
8% minority Staff

**Faculty & Staff at 14
locations**



CMC Revenues

- **35% of revenues come from tuition & fees (18%) and state reimbursement (16%)**
- **65% of revenues come from local property taxes**



The High Cost of Living

COST OF LIVING IN THE CMC DISTRICT

For Those Who Live Close to Work

PERCENTAGE ABOVE AVG. STATE COST OF LIVING

PITKIN	162%
EAGLE	126%
SUMMIT	122%
ROUTT	116%
GARFIELD	113%
LAKE	101%

Source: Legislative Council and Cooperative Extension

Resource Needs

catalog 2001-2002



We need:

- **Technology for distance and on-site education**
- **Access to upper-level and graduate education, including additional REAP funding**
- **A change from Colorado Mountain Junior College District to Colorado Mountain Community College District**

