

University of Colorado at Colorado Springs

Role and Mission Outline

Governor's Blue Ribbon Panel on Higher Education for the 21st Century

November 8, 2001



CU-Colorado Springs 2010 Vision

#1 comprehensive, regional university in
the United States with an enrollment of
10,000 to 12,000 students



CU-Colorado Springs 2010 Vision

- History
- Growth
- Strengths
- Opportunities
- Mission



A Tradition of Service

- Roots to mid-1920s as extension of Boulder campus
- Donation of former Cragmor Sanatorium, 1964
- First classes on Cragmor Campus, September 1965



Expansion with the Region

- Southern Colorado's most comprehensive institution
- Fastest growing Colorado university, 1994-current
- Top 20 fastest growing public universities in nation





Cragmor Sanatorium, the first CU-Colorado Springs buildings, circa 1914



El Pomar Center, CU-Colorado Springs, 2001

Historical Mission

...to be responsive to the needs and sensitive to the desires of Colorado Springs, including appropriate undergraduate and graduate programs consistent with the long-range educational program of the State of Colorado and complementary to the programs of other educational institutions in each area.

Regents Minutes, Jan. 1971



Historical Mission

... a first-class undergraduate institution with such selected master's degree programs as the CCHE may approve from time to time; and established with adequate baccalaureate programs emphasizing the arts and sciences and selected fields such as ...

CCHE, March 1971



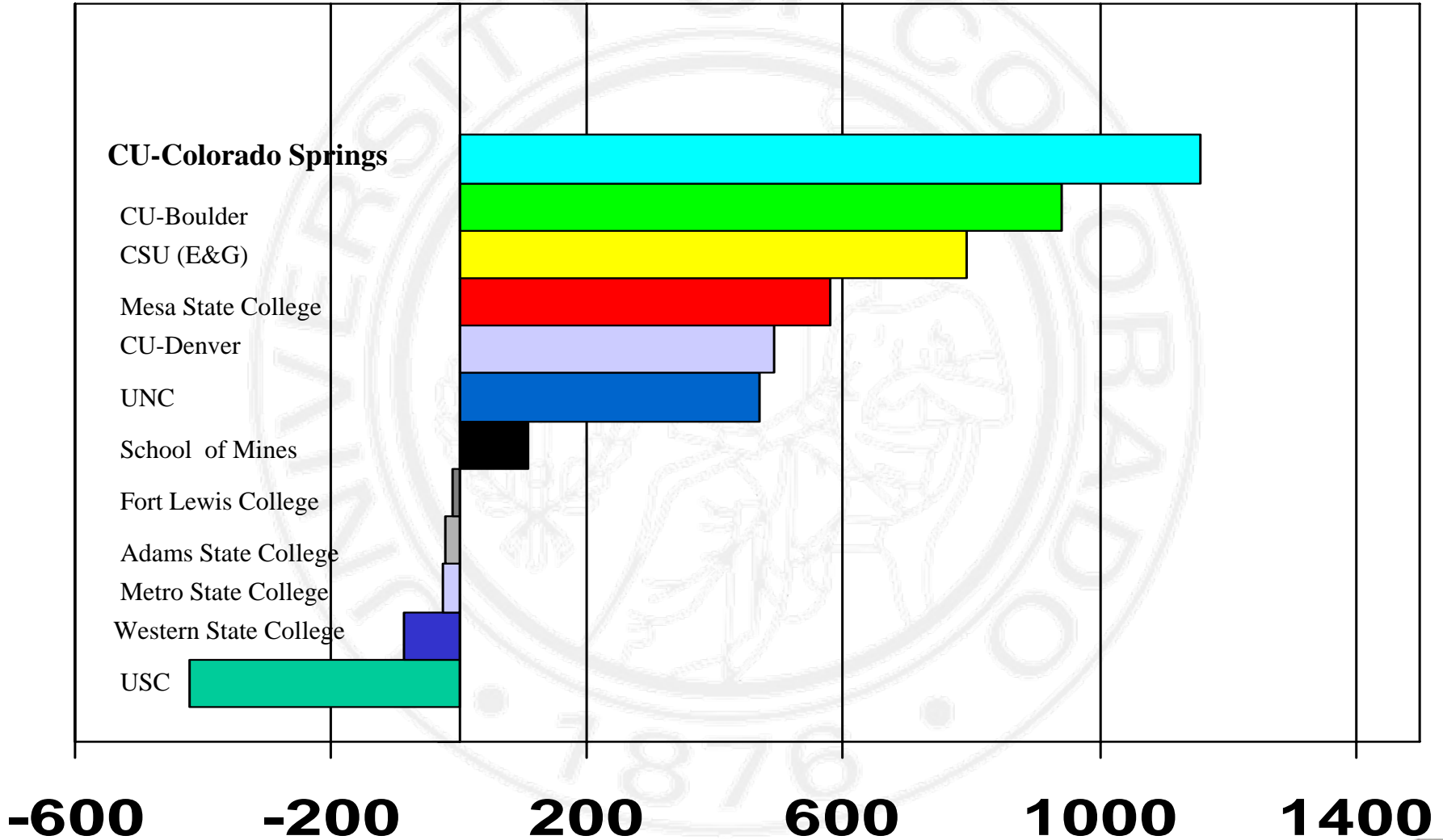
Current Mission

..... shall be a comprehensive baccalaureate liberal arts and sciences institution with selective admissions standards. The Colorado Springs campus shall provide selected professional programs and such graduate programs as will serve the needs of the Colorado Springs metropolitan area, emphasizing those professional programs not offered by other institutions of higher education.

(C.R.S. 23-20-101, 1989)



Enrollment growth colleges & universities 1994-2000



Academic Excellence

- *U.S. News and World Report* ranks CU-Colorado Springs as a “top 10” Western Regional University
- STAR, Pre-Collegiate and University Connection programs extend the university to youth
- Personalized instruction. Average class size is 25; 35 percent of undergraduate classes have fewer than 20 students; only 13 percent of all classes have more than 50 students
- More than 92 percent of recent graduates were satisfied with their education
- More than 43 percent of undergraduates participated in faculty research



Comprehensive Yet Efficient Offerings

CU-Colorado Springs' students may choose from:

- 24 bachelor's
- 16 master's
- 2 Ph.D.'s

Peer universities offer students:

- 43 bachelor's
- 35 master's
- 7 Ph.D.'s

Fall 2001 Enrollment Overview

	<u>Residents</u>	<u>Non-Residents</u>	<u>Total</u>
Undergraduate	4,849	395	5,244
Graduate	1,487	104	1,591
Total	6,336	499	6,835

Fall 2001 Enrollment Overview

Freshmen applications	2,288 (2% increase)
Freshmen enrolled	810 (2.5 % increase)
Graduate enrollment	1,591 (2.3 % increase)

Highly Qualified Students

CU-Colorado Springs has *selective* admissions standards that require a 92 index score. 2001 average enrolled freshman index is 105.

Admission requirements:

- Top 40 percent of high school class
- 24 ACT or 1080 (combined) SAT
- Complete Minimum Academic Preparation (4 years English, 3 years math, 3 years natural science, 2 years foreign language, 2 years social science, 1 year academic elective)



The “average” CU-Colorado Springs Student

Age: 24 years (undergraduate), 35 years (graduate)

Ethnic minorities: 1,220 (18 %), up from 750 (13 %) in 1993

Undergraduates: 5,244 (77 %)

Graduates: 1,591 (23 %)

Total: 6,835 (Fall 2001)

- 80 percent of students work up to 30 hours per week
- 300 students are active- or reserve-duty military
- 30 students are Olympic athletes



Extended Studies

- 2,206 individual students served during FY 2001 (81% studying at the graduate level)
- Programs include master's in Business Administration, Engineering (Space Operations), and Nursing. Multiple course offerings in Education, Mathematics, Biology, Economics, English, and Sports & Leisure Studies
- About one-half of courses conducted over the Internet

Residential and Commuter Campus

- Residence halls opened in 1996
- 600 students live in university housing
- Demand exists for additional on-campus housing



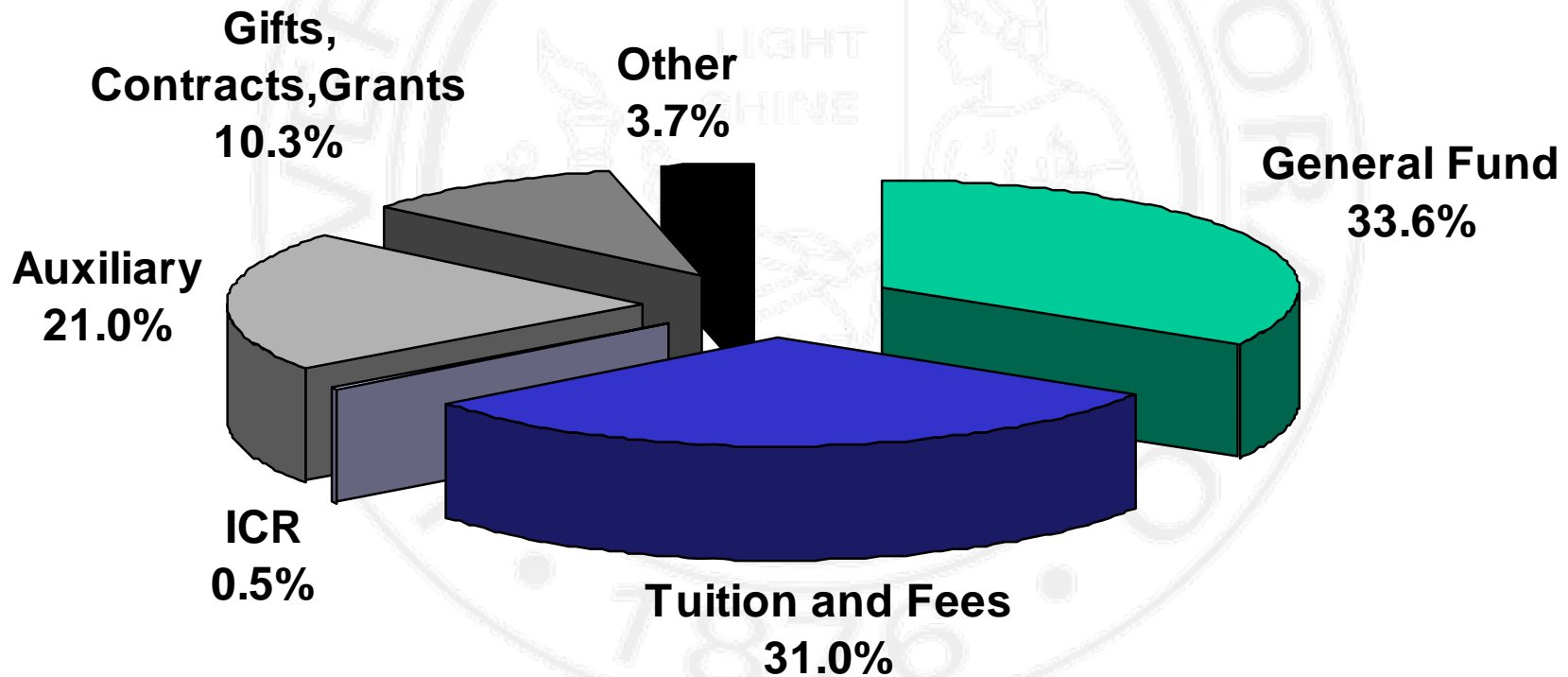
CU-Colorado Springs Housing Village

Student Success

- 30 percent enrollment increase since 1994
- 7 percentage point increase in six-year graduation rate in past five years
- 47 percent increase in minority enrollment since 1994
- Retention rates for minority students exceed majority student population since 1994
- Increase in admitted index score from 102 to 105 since 1994



FY 2002 Current Fund Revenues



Instruction, Research and Community Programs Aligned with Regional Growth and Priorities

- Information technology
- Complex electronics
- Sports
- Tourism
- Non-profit organizations
- 220 regional leaders on university advisory boards

Raising the Bar

- Selective admission standards
- 92 index score required
- 105 average enrolled index of incoming 2001 freshmen

Academic Reputation

- Attracts high-quality students
- Top Western Regional University, *U.S. News and World Report*

2001 Student Population Represents:

- 55 Colorado counties, 44 states, 27 foreign countries
- 15 state community colleges



Graduate Mission Focused on Regional Needs

- 19 patent disclosures in FY 2002 (46 % of CU System)
- Network security partnership with U.S. Space Command
- 90 on-line course offerings in areas as varied as math, business, nursing, engineering, education

High-quality Instruction/Value to Students

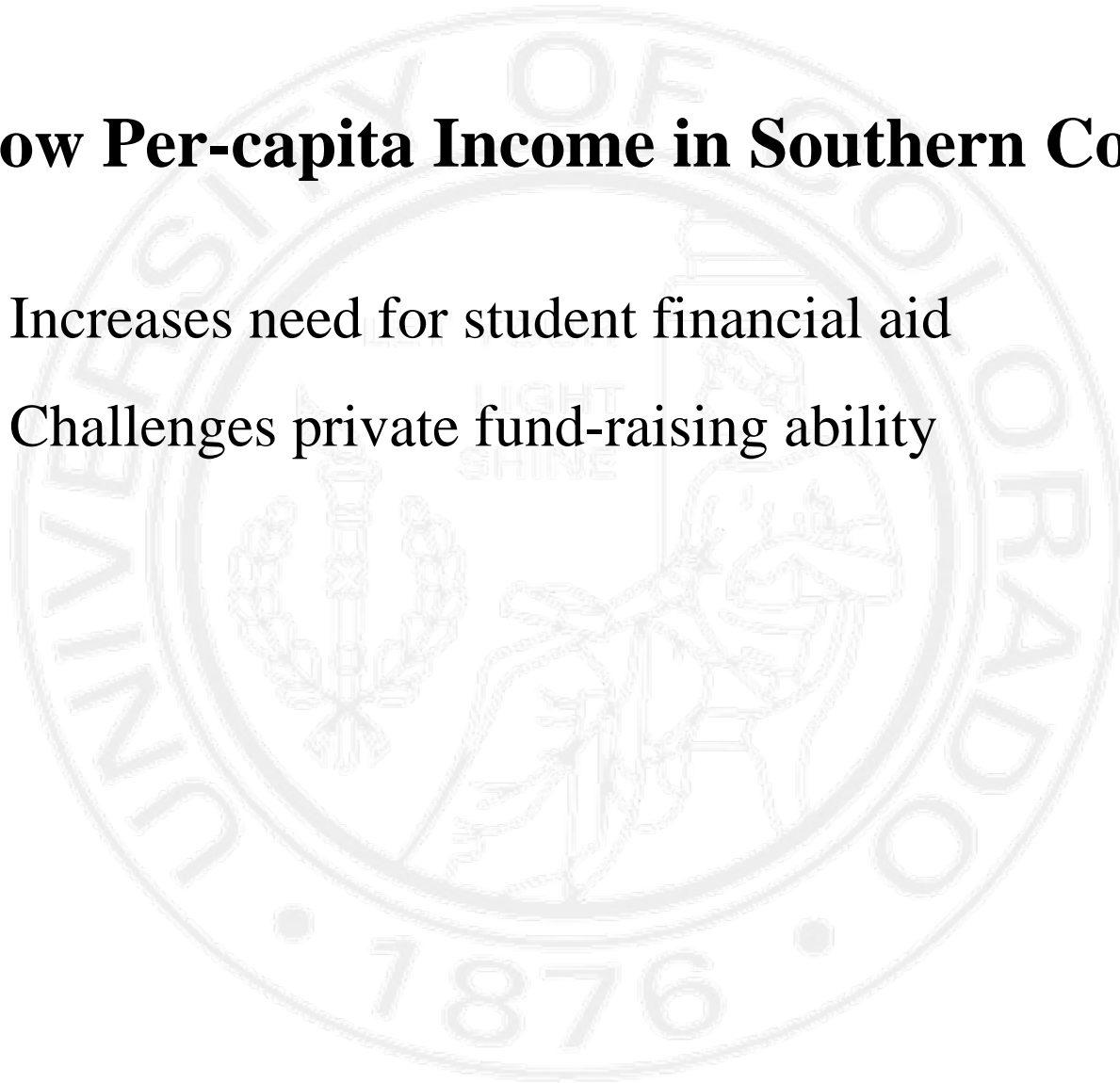
- More than 90 percent of faculty hold terminal degrees in field
- 17:1 student to faculty ratio
- In-state tuition costs 20 percent below national average
- 8 CU presidential teaching scholars, 50% of CU teaching with technology award winners
- 3 endowed chairs, 2 endowed professors

Special Issues

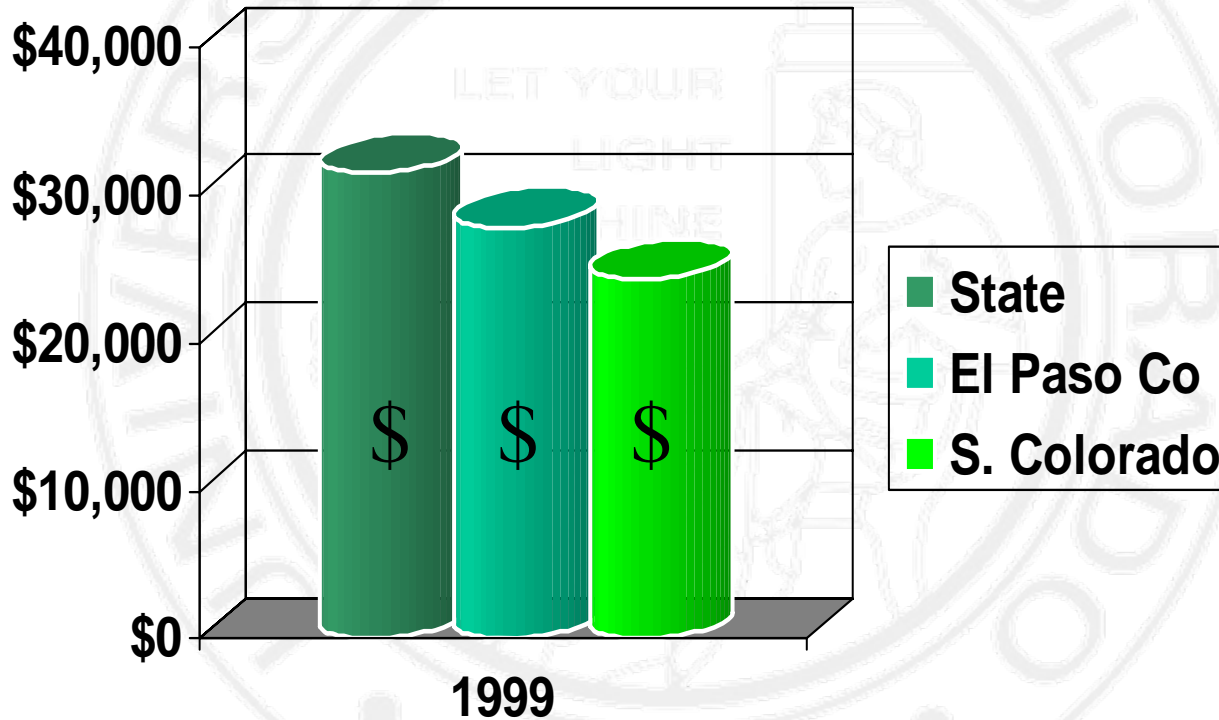
- Scholarship offerings next-to-last among state universities
- More than half of alumni graduated in past decade, hindering ability to raise private funds
- Highly mobile El Paso County population

Low Per-capita Income in Southern Colorado

- Increases need for student financial aid
- Challenges private fund-raising ability



Southern Colorado Wages 20% Below State Average



Demand-driven Space Needs

- 816,000 assignable square feet needed (10,000 students)

Needed Construction:

- Beth-El Nursing and Science, Engineering and Applied Science, Performing Arts, Athletics/Recreation, Student Housing
- Dwire Hall renovation
- Infrastructure

Growth Fuels Demand

- Fast-growing population (26 percent in southern Colorado in past decade)
- Land available for expansion (260 acres)

Regional Backing

- Community support from Chamber of Commerce, Economic Development Corporation and others
- Advisory boards with strong southern Colorado membership





Aerial view, CU-Colorado Springs, July 2001

Campus Expertise Aligned to Regional Needs:

- Health care professionals
- Complex electronic professionals
- Aging issues professionals
- Applied geography/urban planning
- K-12 educators
- Access for low income and first generation college students

Colorado Needs an Educated Workforce

- 86 % of CU-Colorado Springs graduates remain in Colorado
- More than 94 % of graduates employed in field of study



Change Driven by Increasing Excellence in:

- Student body
- Faculty
- Research and teaching
- Regional service

Change Driven by Increasing Demand in:

- Student numbers
- Industry and regional needs

Increasing Opportunities

- Fast-growing population
- Land to grow
- Private fund raising
- Partnerships and contracts
- Research grants
- System-wide links
- Students wanting a high-quality CU experience
- CU's growth campus



Proposed Mission

The Colorado Springs campus of the University of Colorado shall be a comprehensive baccalaureate liberal arts and sciences institution with selective admission standards serving southern Colorado and the State of Colorado. The Colorado Springs campus shall provide selected professional programs and such graduate and research programs as will serve the needs of southern Colorado, and unique programs that serve students statewide.

November 2001



CU-Colorado Springs 2010 Vision

#1 comprehensive, regional university in
the United States with an enrollment of
10,000 to 12,000 students

